

Head Start is a part of the Mid-East Community Action Agency. Below is Basic Information on the other programs that are offered through Mid East Community Action Agency. Many of our Head Start parents qualify for these additional services. Other requirements may apply. The listed information is subject to change at any time.

Roane County: 865-354-0450 Loudon County: 865-986-5212

Program	Service Offered	Program	Service Offered	Program	Service Offered
Cash Assistance <u>CSBC</u>	Baby Formula Food Medicine	Low Income Home Energy Assistance Program *Must meet income guideline	Energy Bills or Home Fuel	Emergency Food & Shelter (Roane County Residents only) *If approved on energy program or crisis program they are not eligible for EF & S	Utility Bill Rent or Mortgage
Elderly Assistance <u>CSBC</u>	Ensure Eyeglasses	United Way (Roane County Residents Only)	Motel Utilities Rent	Low Income Home Crisis Assistance Program *If approved on energy program they are not eligible for crisis assistance	Energy Bills Or Home Fuel
Homeless CSBC * 12 months from last service	Homeless Letter Rent Deposit Motel Rental Assistance	Weatherization	Home Repair for better energy efficiency	USDA Commodity Foods	Surplus Foods Distributed Quarterly
Thinking of Others <i>(REL residential customers only)</i>	Utility Bill	Office On Aging (Roane County Residents Only)	Information and Referrals Outreach Benefit Screening	Senior Nutrition	Hot Meals
Warm Hearts <i>(HLE residential customers only)</i>	Utility Bill	Customer Share Program <i>(Et Loudon Electric residential customers only)</i>	Utility Bill	Senior Center <i>(Roane County Residents Only)</i>	Activities: Bingo, Bowling, Health Promotions, Luncheon, and Picnic
Customer Share Program <i>(VEC residential customers only)</i>	Utility Bill				

MECAA



Annual Program Report 2010-2011



HEAD

START

Where it's all about
children and families

Information in this brochure is designed to fulfill requirements of Head Start federal law related to reports to the general public.

Mid-East Community Action Agency operates as a contract agency for the Tennessee Department of Human Services, Council on Aging (Title IIIB&C), EFPS, Head Start/Health and Human Services, Department of Education/Roane County Schools; Loudon County Schools, Child and Adult Feeding Program/USDA, and local United Way programs.

Mid-East Community Action Agency does not discriminate on the basis of race, national origin, sex, disability, or age in its programs, activities, and employment.



MECAA

Mid East Community Action Agency



**LOCATED
IN
Loudon & Roane Counties
Providing:**

- A pre-school/pre kindergarten education and family support services for more than 400 of the most vulnerable children in our area.
- An excellent infant, pre-school, pre kindergarten and home based program
- Home based and classroom programs available
- Extended day Pre-K/Head Start classroom available
- Preventive health care for each child
- Free dental screenings
- Health insurance referrals
- Family goal planning and other social services
- Emergency assistance via referrals to local resources
- Special education services for children with disabilities
- Well trained staff with degrees or CDA credentials
- Follow State Pre-k and Head Start standards
- Bilingual staff available
- Bilingual curriculum available
- Nutrition services
- Mental health services with on-site consultations
- Hearing, vision, speech, and language screenings
- All Head Start centers are Tennessee licensed
- Comprehensive Child Assessment system in all areas of development

Head Start by the Numbers

- 466 Number of children funded.
- 404 Average monthly enrollment (includes Pre-K)
- 532 Number of children served during year
- 61 Number of teaching staff
- 12 Number of home visitors
- 19 Number of classrooms
- 64 Number of children served who had a disability
- 673 Number of volunteers
- 365 Numbers of families served
- 52 Number of homeless children served
- 100 % Percentage of children who received medical treatment
- 100 % Percentage of children w/disability who received special services
- 57 % Percentage of single-parent families
- 44 % Percentage of single-parent families in which the parent is not working
- 24 % Percentage of two-parent families in which neither parent is working
- 28 % Percentage of families without a high school degree
- 100 % Percentage of families participating in family goal planning

**Head Start in Roane & Loudon County is operated by
Mid-East Community Action Agency**

In addition to the federal grant of \$ 2,900,221 for Head Start, MECAA also receives

- \$ 158,367 from the U.S. Department of Agriculture as reimbursement for the cost of food used in Head Start;
- \$ 450,282 in local matching funds from Roane County Schools and Loudon County Schools for State Pre-kindergarten programs.
- Private cash and other donations which individuals and businesses make in support of the program.

In 2012 our federal grant amount will be \$ 2,278,332 following the end of ARRA funded grants.

Areas of Development



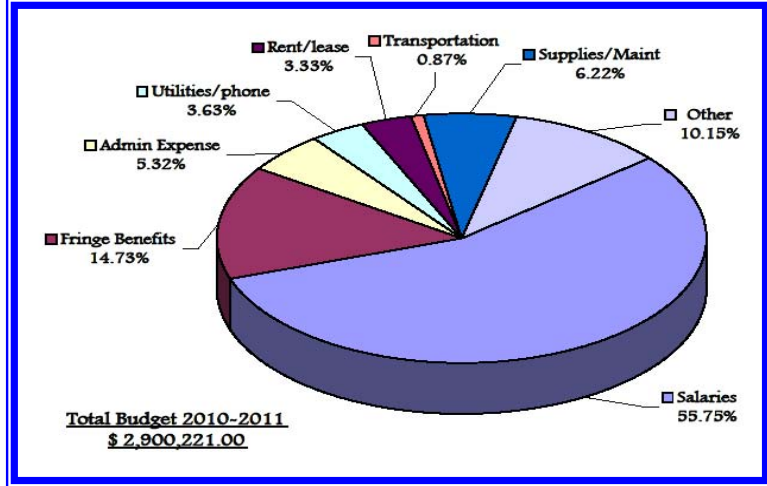
Head Start children learn many skills in all areas of development. The 4 major areas of Development are **Motor skills, Cognitive Skills, Language/Literacy skills, and Social skills**. Children are exposed to creative ways that explore all areas of development.

Motor skills are made up of both *fine motor* and *gross motor* skills. Children receive daily practice at *gross motor skills* that include running, jumping, playing, climbing, catching and throwing on well-equipped playgrounds. Emphasis is also placed on development of each child's *fine motor skills* with activities such as working with play-doh, scissors, screwdrivers, writing, painting, and manipulatives.

The program helps children develop *social* and *emotional skills*. MECAA HeadStart has adopted the CSEFEL (Center for Social Emotional Foundation of Early Learning) approach. This approach focuses on the prevention of challenging behavior. Children are encouraged to talk about feelings and ideas about the world around them. As a result, children develop self-control and abilities to cooperate with others.

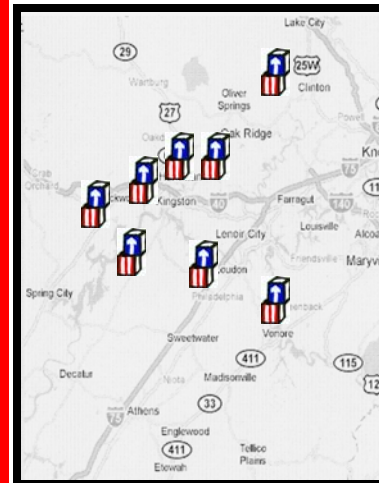
Children develop early *reading* and *writing skills* that stay with them the rest of their lives. They learn fundamental math skills so they can recognize patterns as well as sort and count things. Children also develop basic *science skills* so they can explore and organize the world around them.

Children will also develop good health practices like tooth-brushing, hand washing, toileting, and personal hygiene.



Typical Services Offered or Through Referral to families

- Adult education
- Job counseling
- Job training
- Job search
- Marriage enrichment
- Parenting
- Fathering
- Counseling
- Child support
- Food
- Shelter
- Clothing
- Utility payments
- Medical services
- Dental services
- Home safety
- Literacy programs



Serving Roane & Loudoun Counties

PARENT ACTIVITIES

- Visits with musicians
- "Dad-friendly" activities
- End of year Kindergarten visits and registration with teachers
- Mental health, adult education & domestic violence presentation
- Reading Is Fundamental (RIF)
- Medical & dental appointments & follow-ups
- Child development training
- Parent volunteers in the classroom
- Pregnant Mom's Services
- New Dad's packets
- Open house activities
- Correspondence Courses
- Fun Kitchen Creations
- Smoking Cessation
- Wellness Program
- What to Do with the Mad You Feel
- Heart to Heart-Relationships, Mental Health, Heart Health
- Celebration and Traditions-Valuing culture
- Tool box for Success-Parent Training

Head Start Kingston Annex Administrative Office

Centers:

Evans Heights
Fairmont
Rolling Acres
Harrison Hills

Loudoun County Schools Collaborative Classroom

Harrison Hills

Roane County Schools Collaborative Classrooms

Oliver Springs Elementary
Midway Elementary
Ridgeview Elementary
Midtown Education Center



Mid-East Community Action Agency's HEAD START

A program of EXCELLENCE

Mid-East Community Action Agency's
HEAD START
A program of EXCELLENCE



Mid-East Community Action Agency's (MECAA) Head Start Program in conjunction with the Roane County Schools' and the Loudon County Schools' State Pre-Kindergarten program operates 19 infant, toddler, and preschool/pre-k classrooms in Roane and Loudon Counties. MECAA also provides home based services for a total of 161 preschoolers and infants/toddlers. All families must meet state and federal income eligibility requirements.

Loudon and Roane Counties are located in east Tennessee between the Cumberland and Smoky Mountains. About two thirds of the classrooms (including collaborations) are located in Roane County in the communities of Oliver Springs, Midway, Rockwood, and Harriman. The other one third of the classrooms is located in Lenoir City in Loudon County.

Home based caseloads are equally divided between both counties for a total of 46 families per county. Of these families, pregnant mothers and children through the age of four year old are being served. Each home visitor has a caseload of eleven or twelve families.

Infant/toddler classrooms have two teachers while the preschool/pre-k classrooms have a teacher and a teacher assistant. Families also receive social services, health, mental, dental, nutrition, special needs, and parent involvement services.

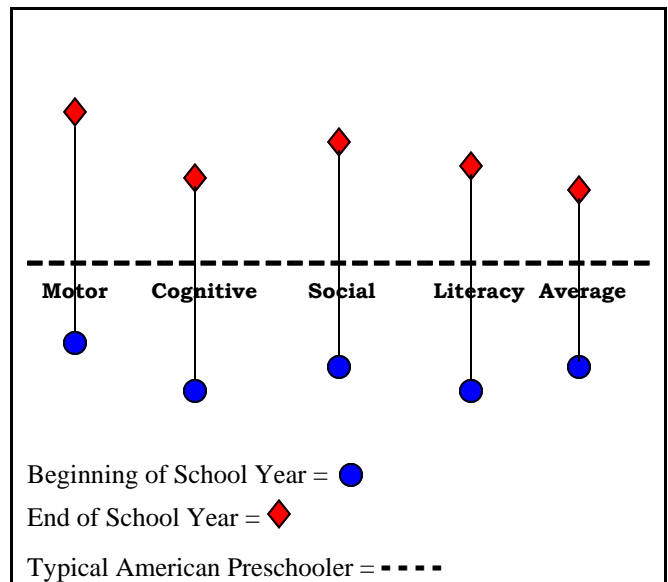
During the 2010-2011 school year, MECAA has also been awarded American Recovery and Reinvestment Act (ARRA) funds to operate a home based program for pregnant and parenting teens for forty-eight (48) families. This program is located in both counties with an average caseload of nine (9) to ten (10) families for each home visitor.

Head Start Transition to Kindergarten:

This year 54% of the children entered kindergarten. As one can see by the graph below the children entering kindergarten scored well above the national norms. Children are assessed in all areas of development three (3) times per year. Assessing children three (3) times per year indicates on-going progress and outcomes from Fall to Spring.

To provide a smooth transition for children and families to kindergarten, transition activities and experiences are available. Children are given an opportunity to visit the school that they will be attending and also visit a regular kindergarten classroom. Parents are invited to parent meetings with guest speakers from the school systems to inform them of expectations and experiences in kindergarten. Each child moving on to kindergarten will receive a "Kindergarten Readiness Packet" with information and games families may engage in during the summer months.

A Year of Progress
All children in MECAA Head Start / Pre-k



As a group, MECAA Head Start children usually begin their year below the level of the typical American preschooler. However, by mid-year, these children surpass the national norms. By the year's end the children are significantly above the nation norms in all areas of learning. This chart indicates outcomes from the 2010-2011 school year.

Federal Review, Audits Indicate Excellence

In November 2008, a federal review team congratulated the staff, parents, and board members on the agency's practices, procedures, and successes. The federal team issued a final report, with no findings. The agency's annual fiscal audit (FY 2010), and the USDA/CACFP Review (2010) were also without any findings.

Documents are available for public inspection.

Mid-East Community Action Agency

P.O. Box 790
1000 Bradford Way
Suite 500
Kingston, TN 37763
865-354-0451
Fax: 865-248-8664

Jerry Johnson
MECAA Executive Director

Mid-East Community Action Agency

Kingston Annex
Head Start Administrative Office
P.O. Box 790
1000 Bradford Way
Suite 500
Kingston, TN 37763
865-376-2308
Fax: 865-376-2347

April Plemons
Head Start Director

